

Smartalock

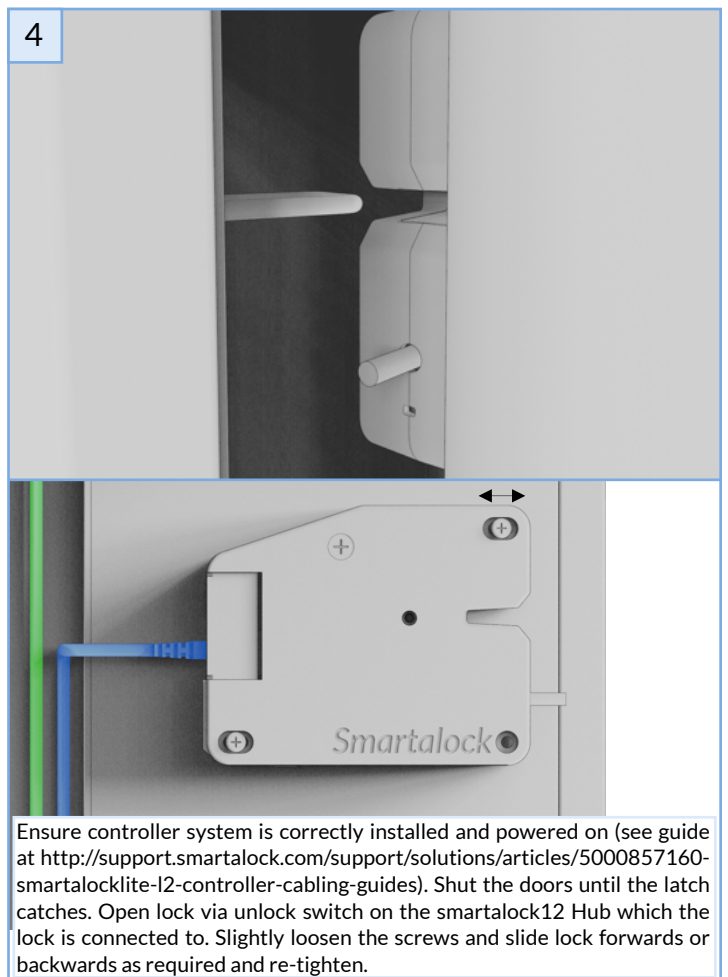
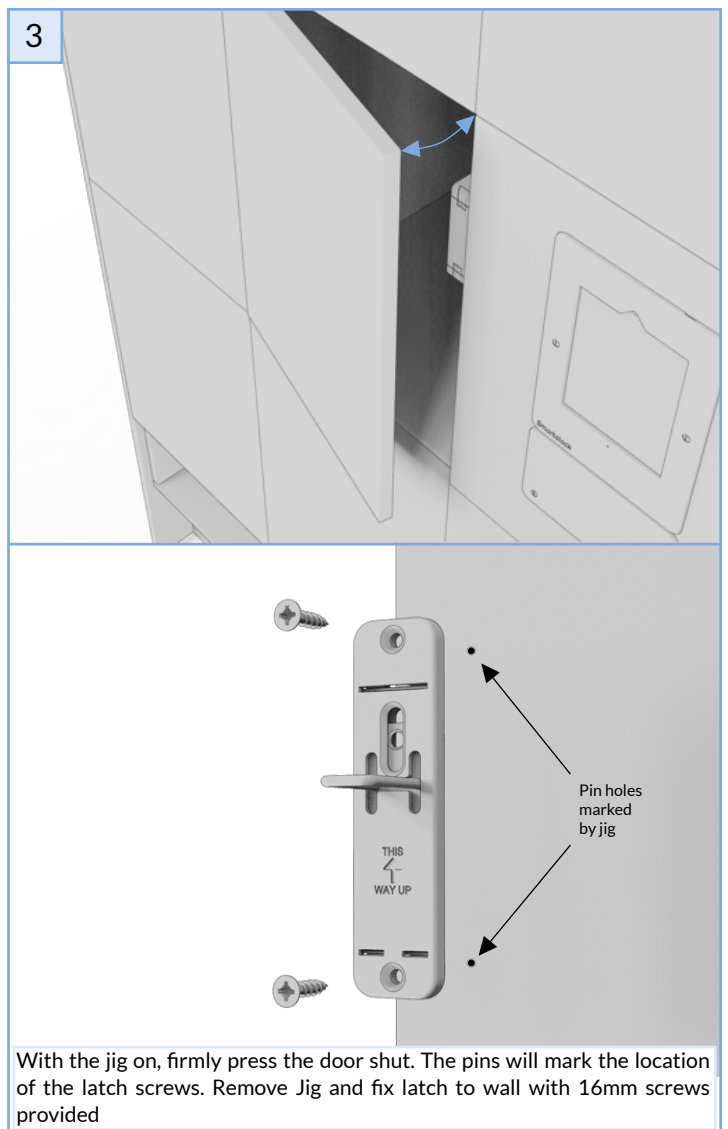
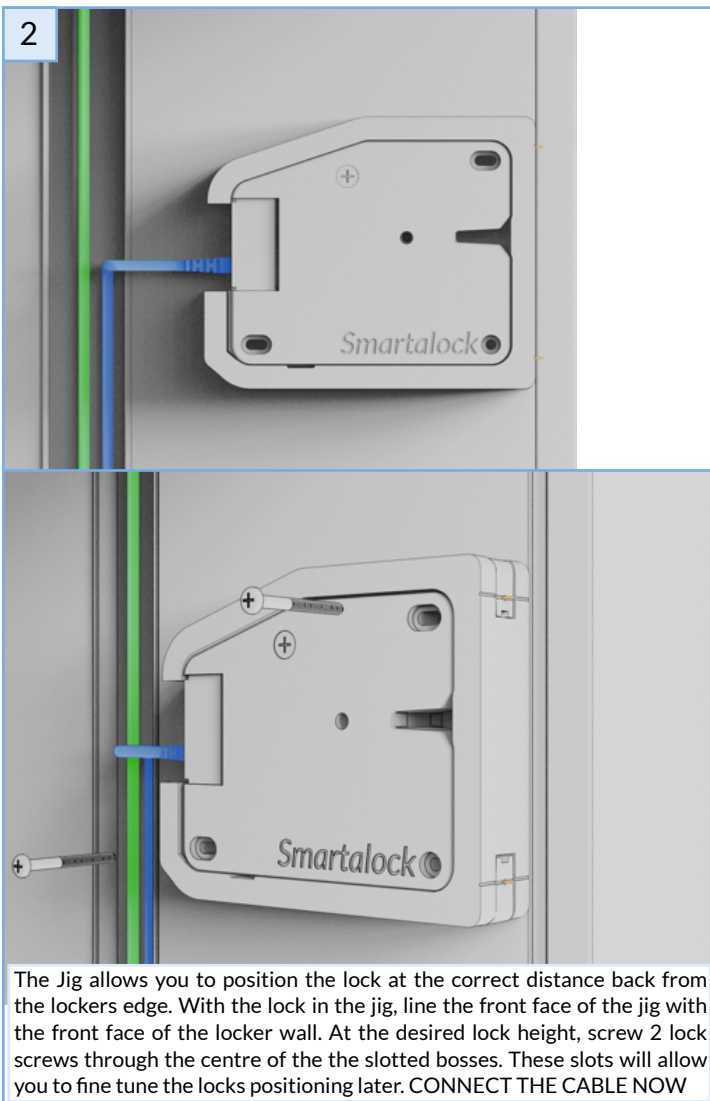
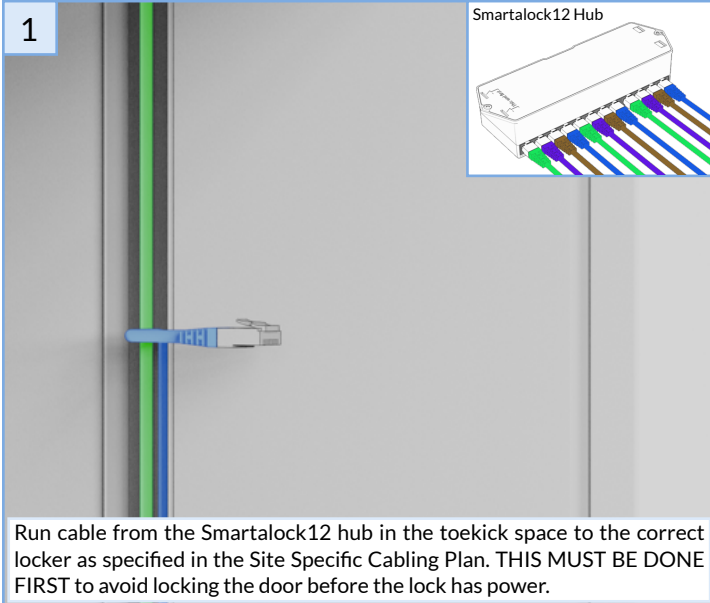
Smartalock L2 Installation Guide - With Jig



What you need:

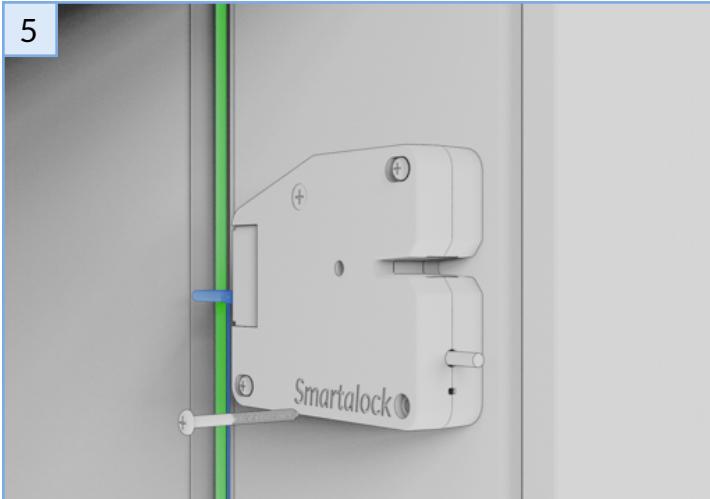
Lock (1 per door)
Wire Cover (1 per door)
Latch (1 per door)
RJ45 Cable (1 per door)
4x40mm Lock screws (3 per door)
4x30mm Wirecover screw (1 per door)
3x16mm Latch Screws (2 per door)

Power Screwdriver
Site Specific Cabling Plan
Installation Jig



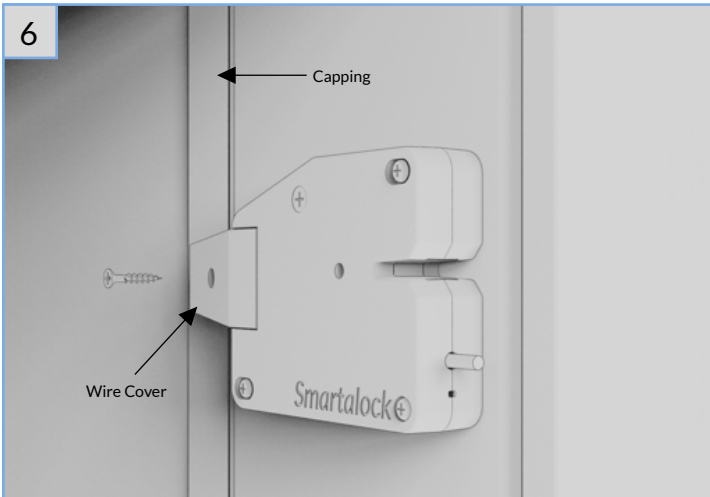


5



Once lock is in the correct position secure in place with the third screw.

6



Fit the aluminium extrusion capping if appropriate. Press the wire cover into place and fasten with 25mm wood screw. This locker is now complete. Repeat process for all lockers.