

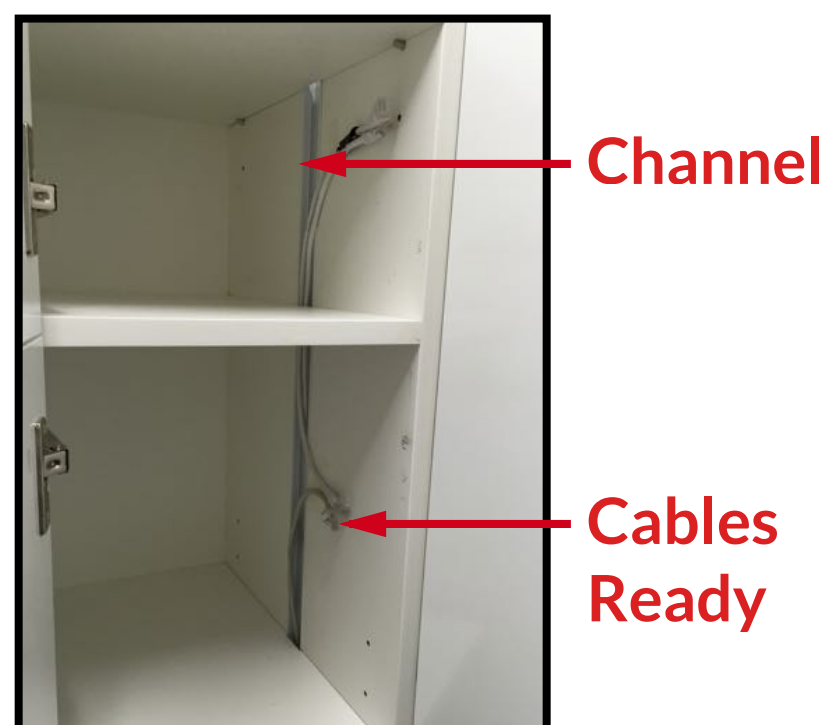
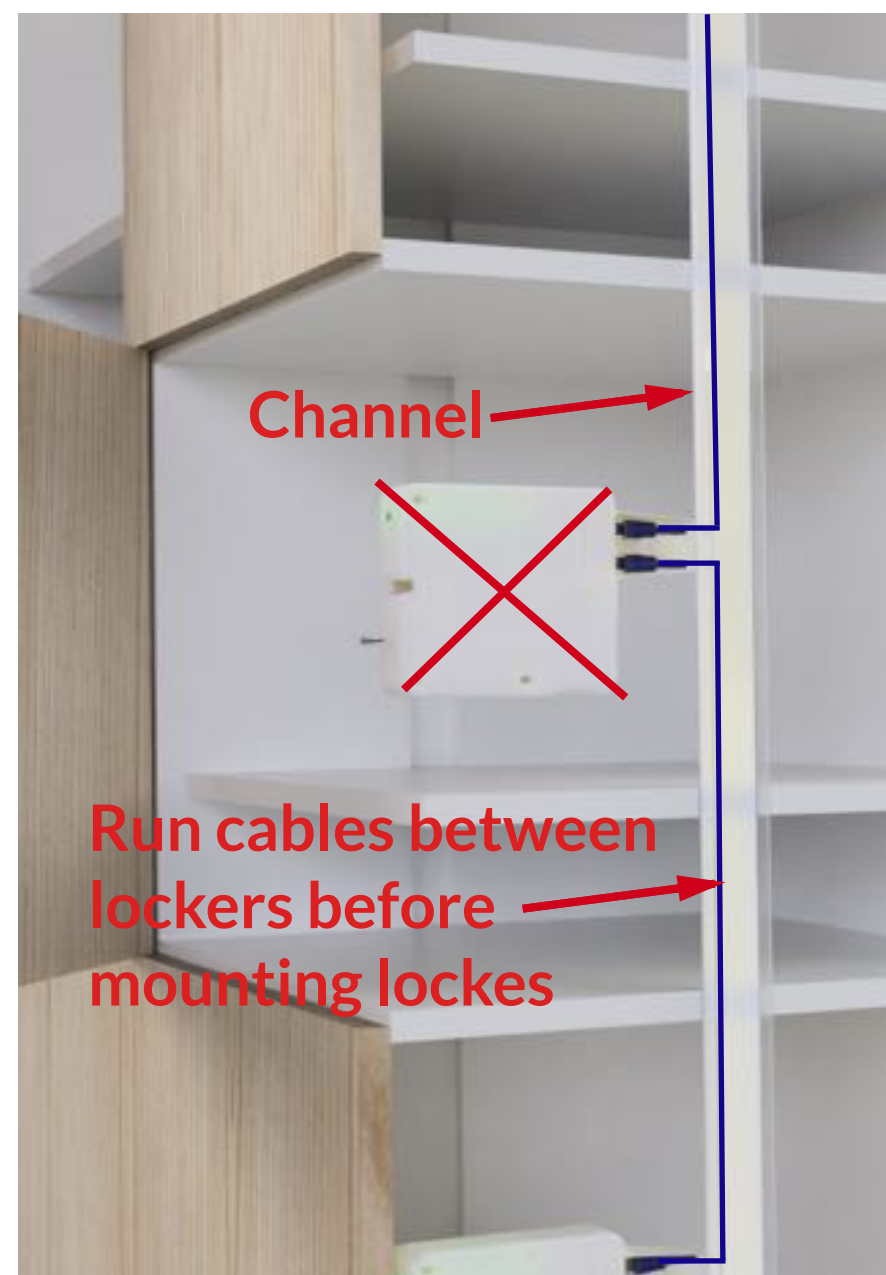
Smartalock Lock Installation Guide - Version 2.0 Locks

Smartalock v2 Locks should be installed with a Jig. Jigs are supplied to authorised installers as part of their initial training. Additional Jigs are available for purchase if lost. The Jig saves measuring the offset of the lock from the door face and also lining up the latch position. Prior to any lock mounting, power and cabling should be run in the channel that runs between each locker. It is essential that cabling and power is available

Follow the supplied Smartalock Cabling Plan which is generated for each system sold.

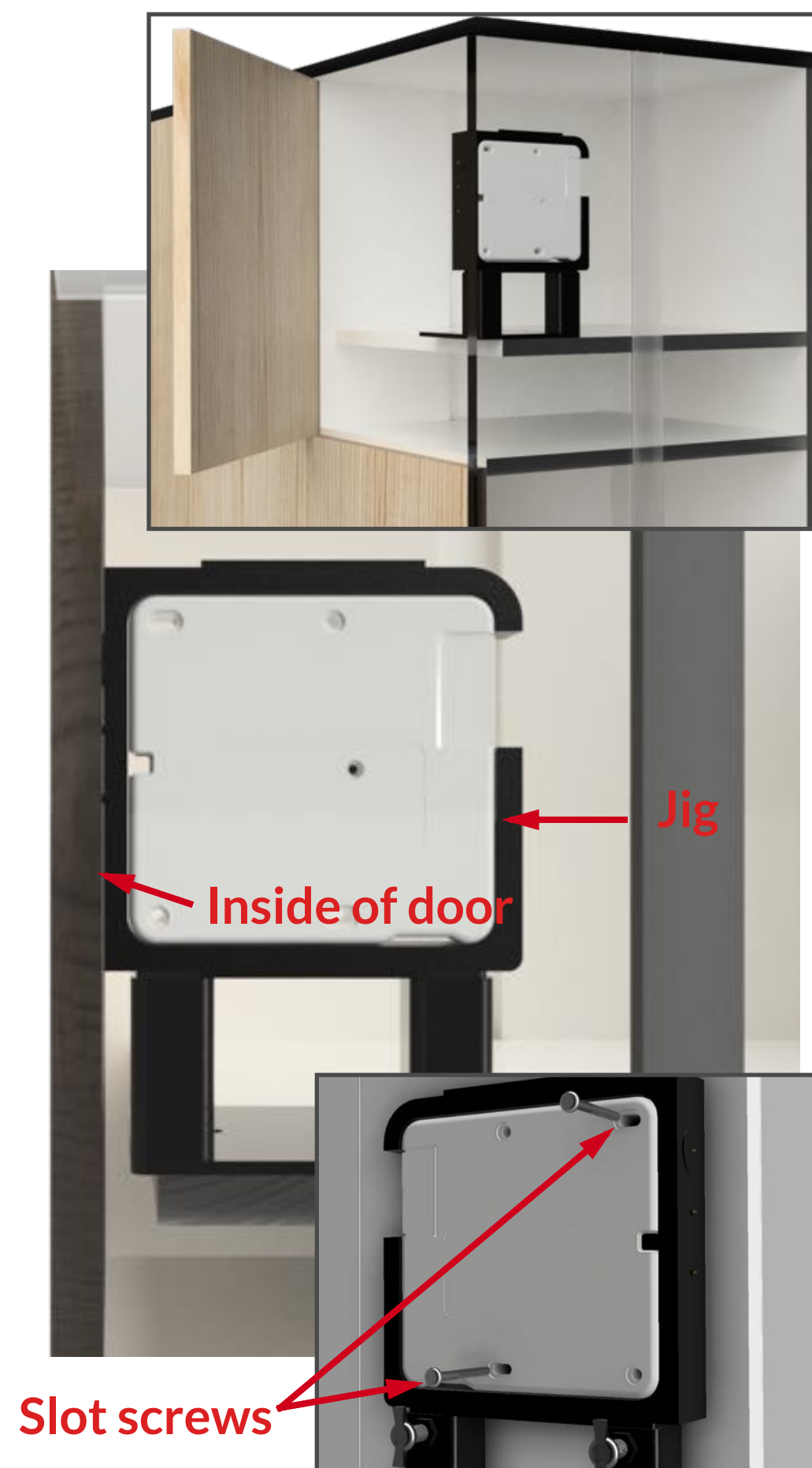
1 Run Cabling and Power First

Ensure cables are run in channel, and power is available in kick before mounting locks. **Otherwise you risk locking door with no way of reopening it.**



2 Mount Locks Using Jig

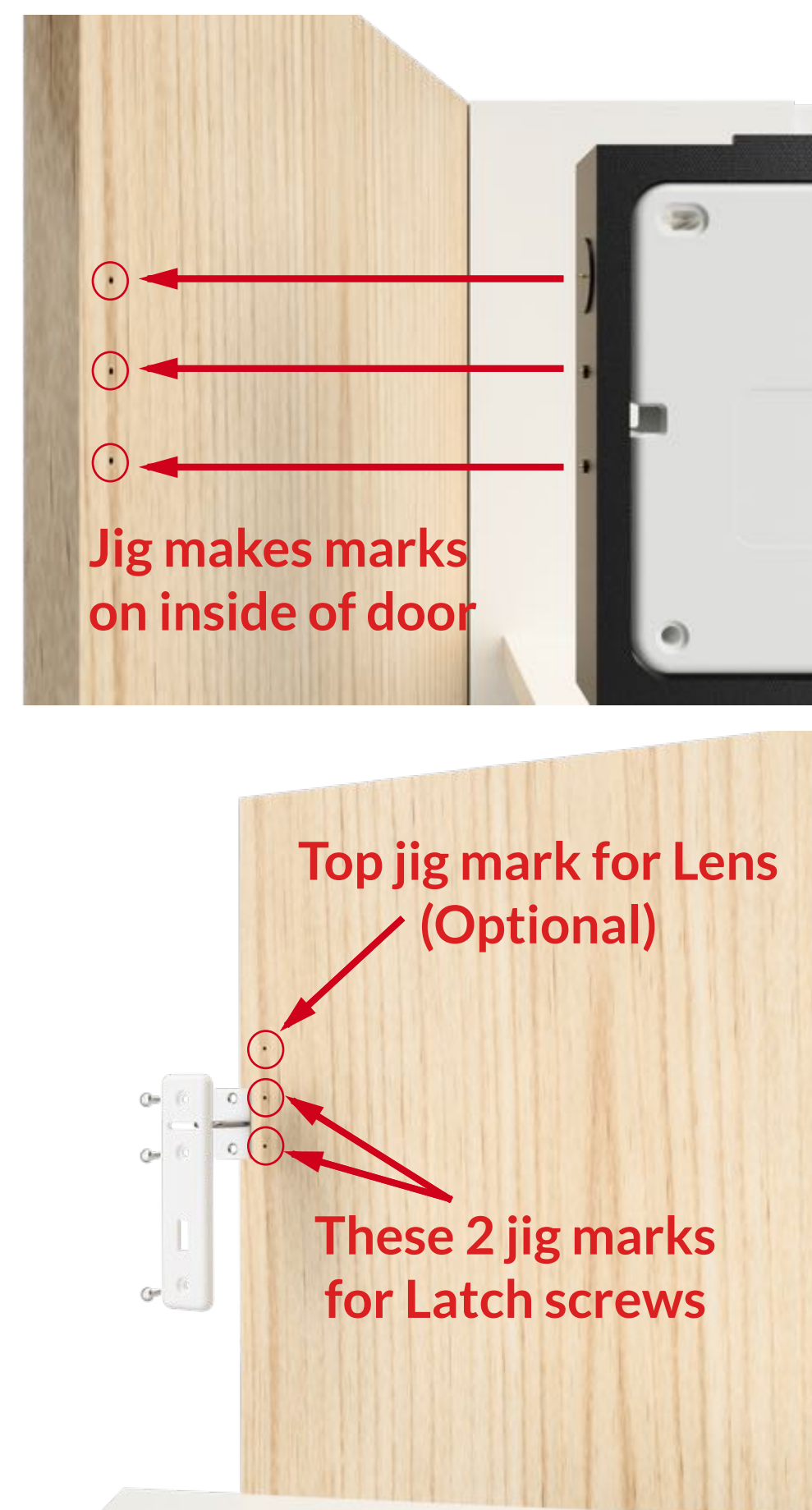
Line front of jig up to edge of door. Set Jig height appropriate to size of door to make consistent for all doors. Screw in Lock to sidewall via the slotted holes only. Note depending of if door is overhang or flush with locker carcas will determine jig position. Jig front edge should touch inside of door so pins can stick in.



2

3 Mount Latch Using Jig Marks

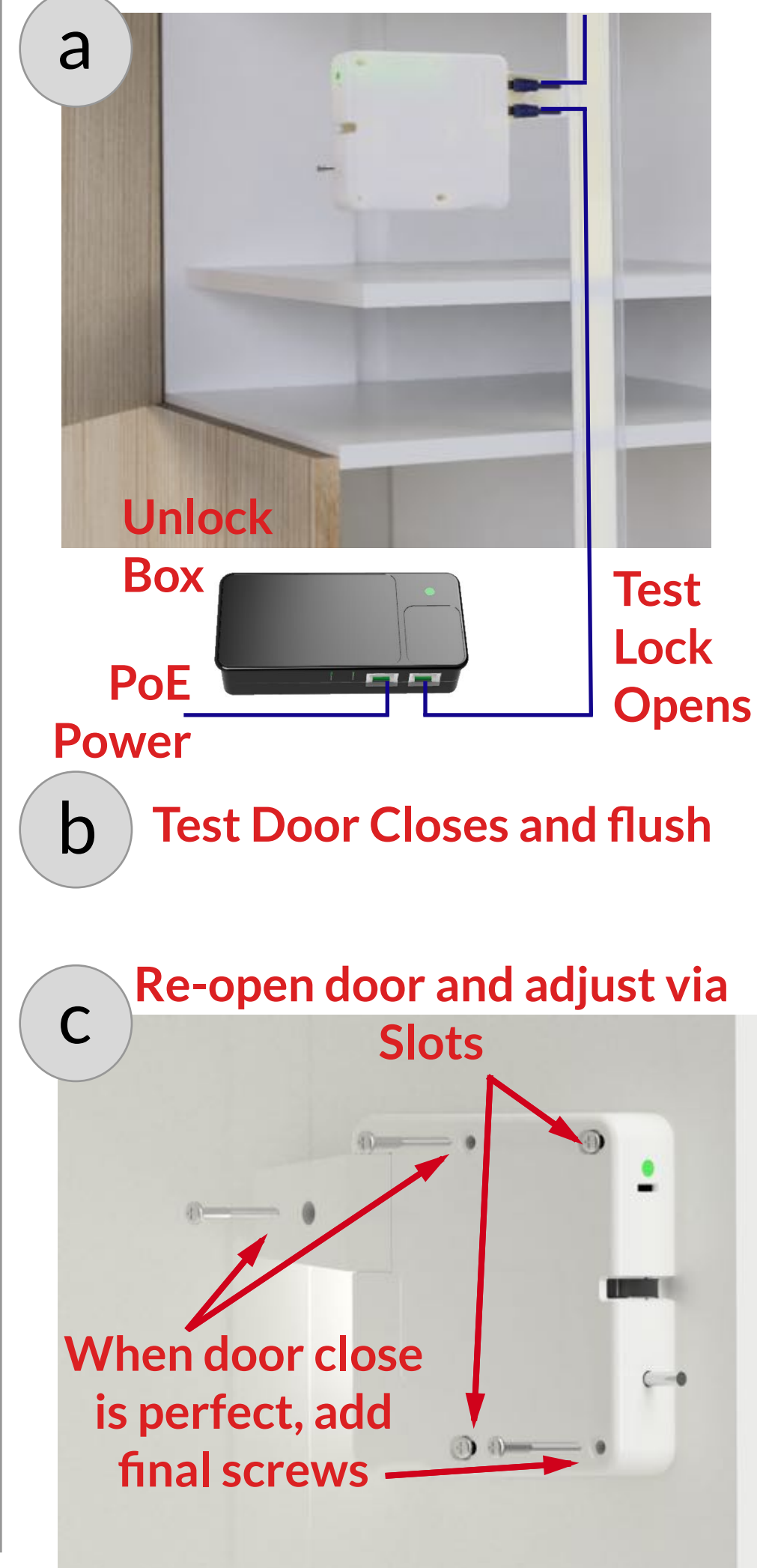
With Jig still attached to lock, firmly close door so the pins in front of jig mark 3 dots on inside of door. The top mark is for the Lens (if drilled - it is optional) and below 2 marks are for top 2 screws in the latch enclosure.



3

4 Test Lock opens then test close door

Connect cables to lock, and then test door opens by connecting to Unlock Box. After verifying door will reopen, close door and adjust the locks position via slotted screws. When perfect, fix position with final 3 screws.



4